

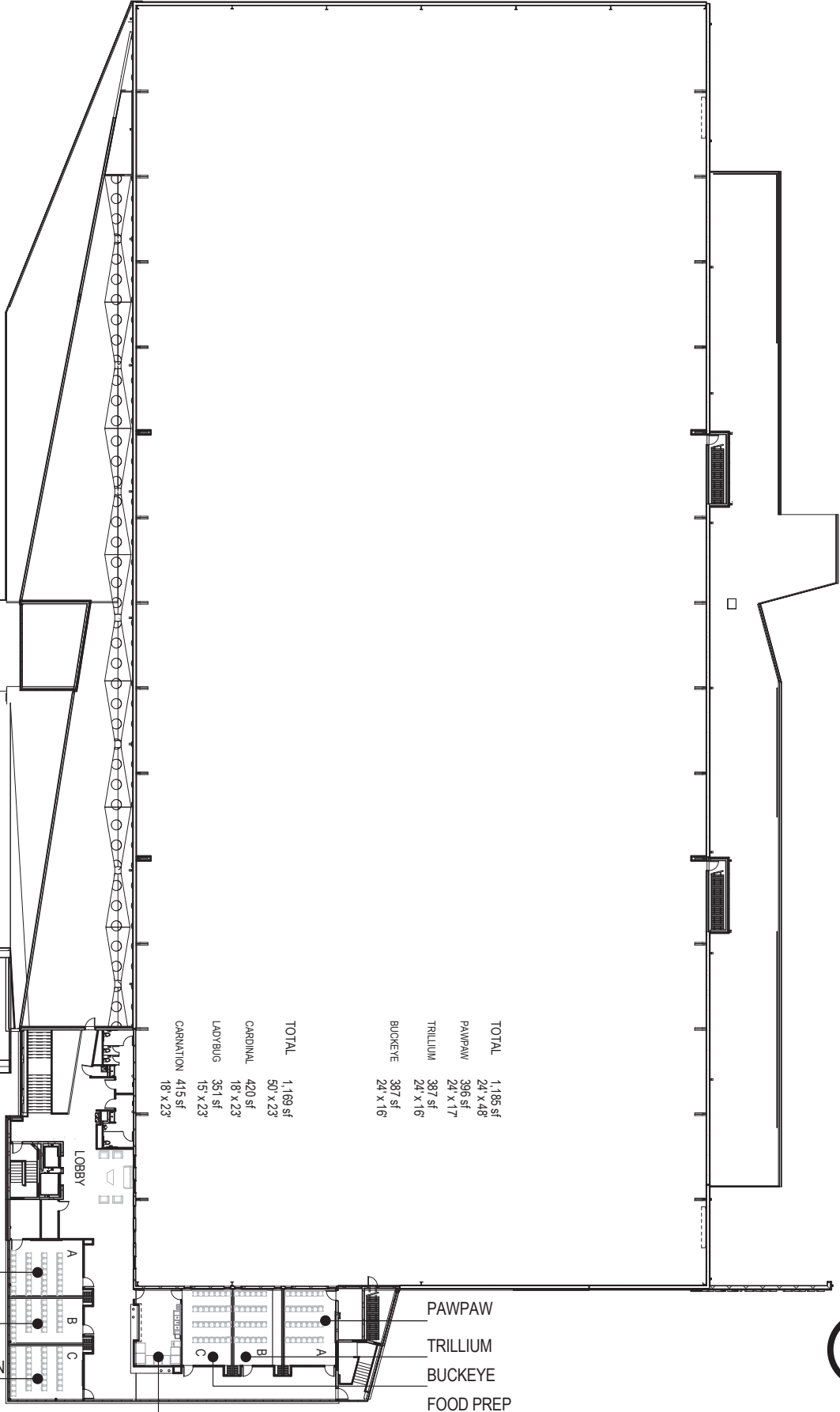
FIRST FLOOR



SECOND FLOOR



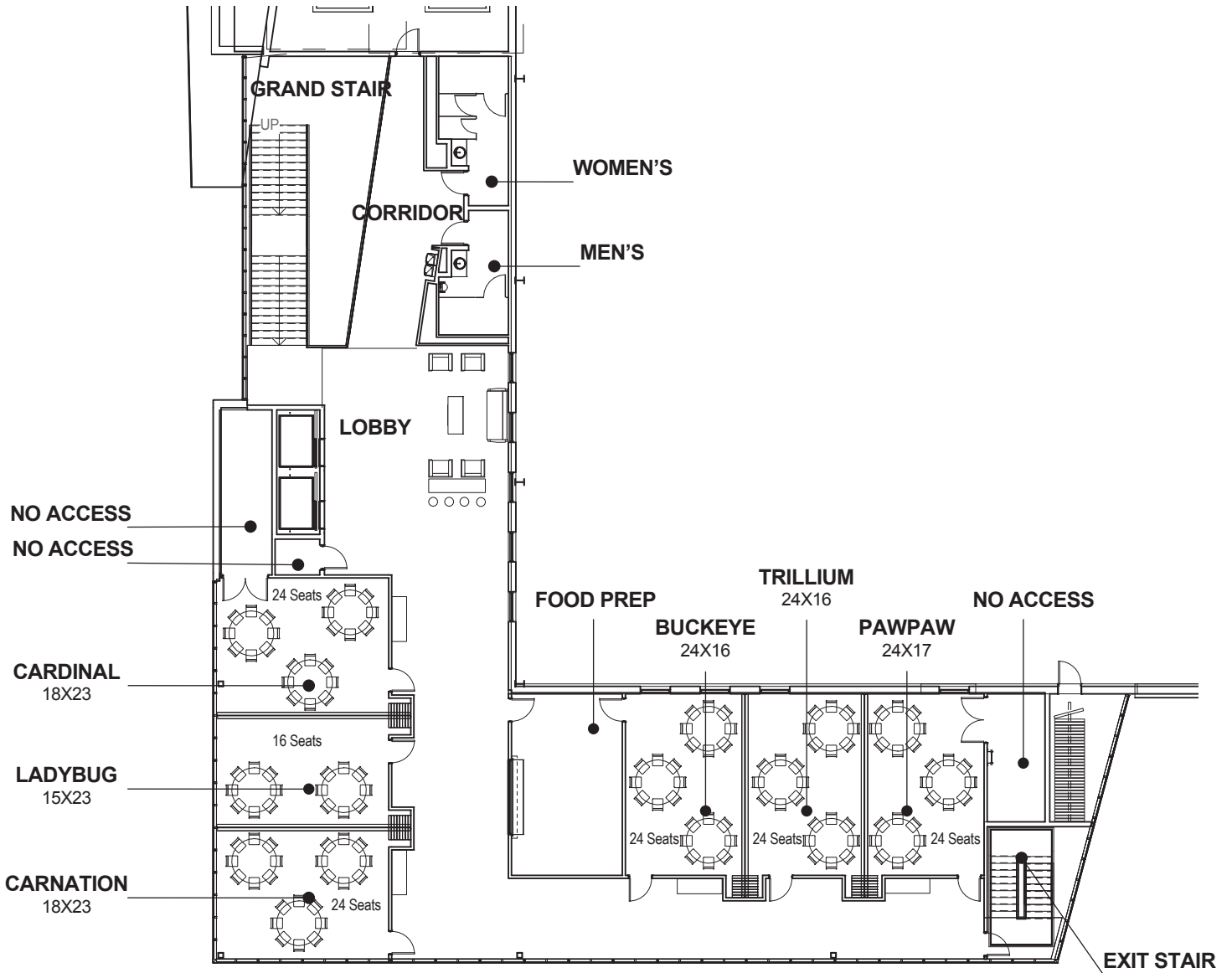
CARDINAL
LADYBUG
CARNATION



TOTAL	1,185 sf
CARDINAL	50 x 23
LADYBUG	18 x 23
CARNATION	15 x 23
TOTAL	1,185 sf
PAWPAW	24 x 48
TRILLIUM	24 x 17
BUCKEYE	24 x 16

PAWPAW
TRILLIUM
BUCKEYE
FOOD PREP

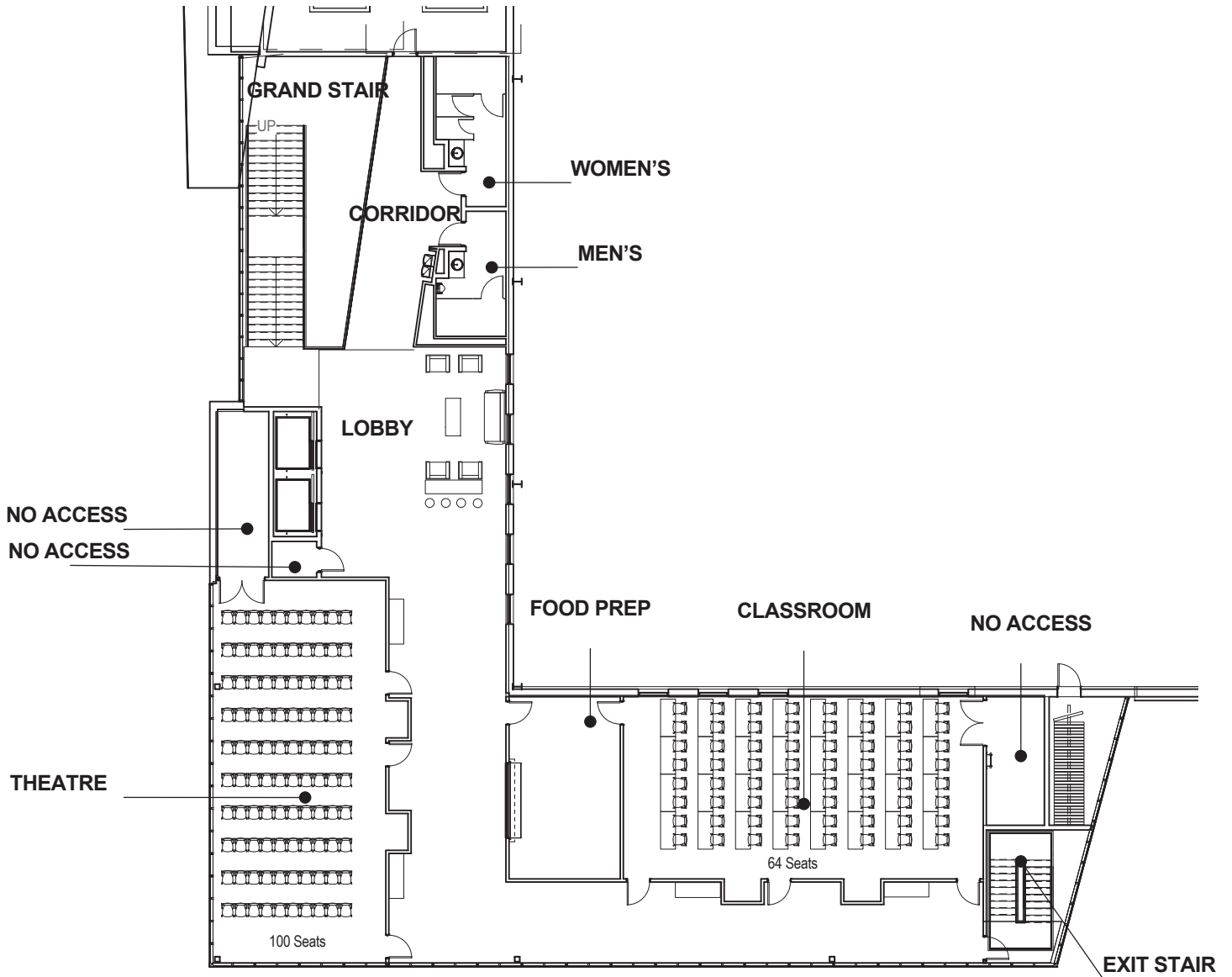




Meeting Rooms- Banquet Option

1/16" = 1'-0"

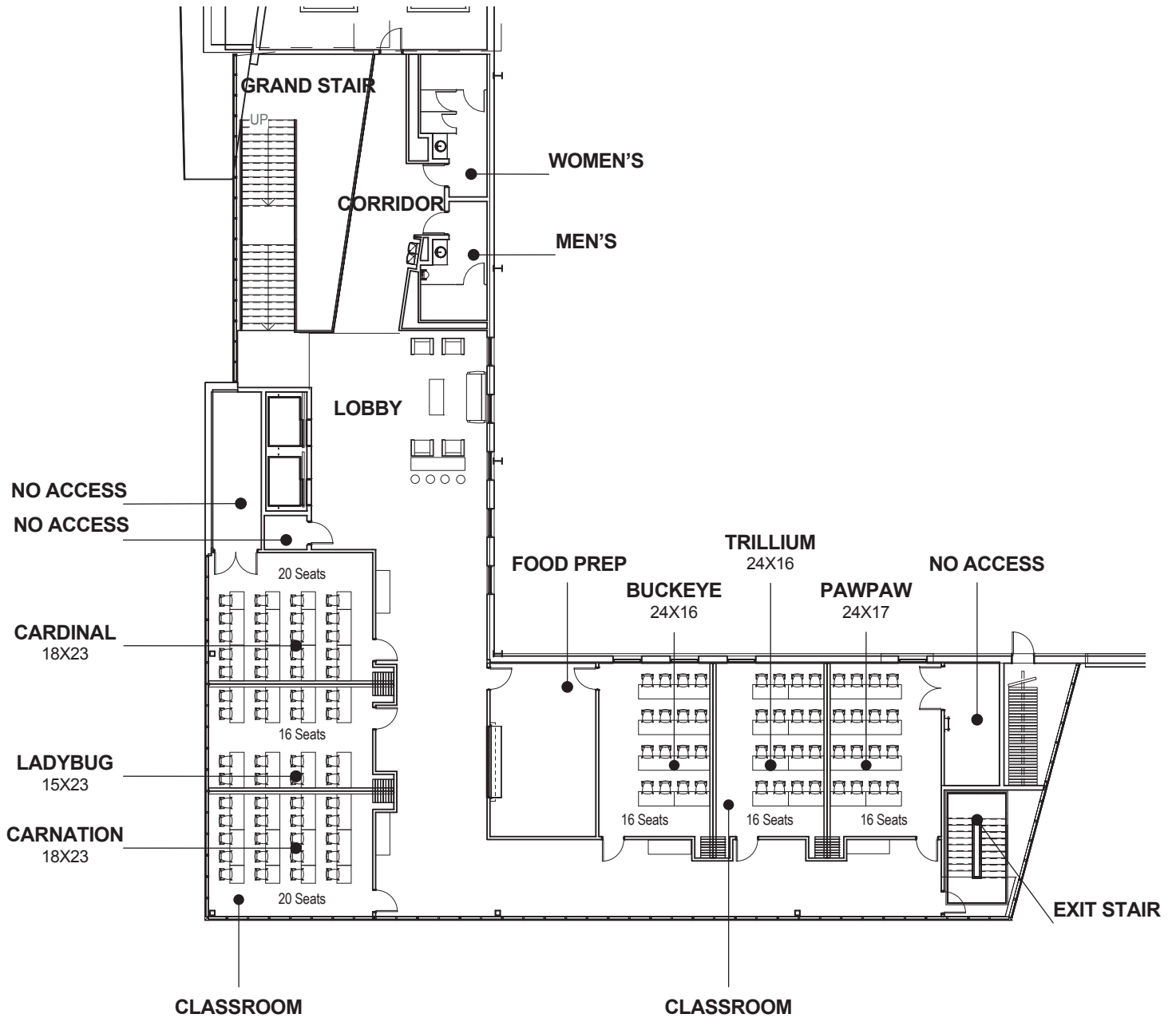




○ Meeting Rooms- Classroom & Theatre Option

1/16" = 1'-0"

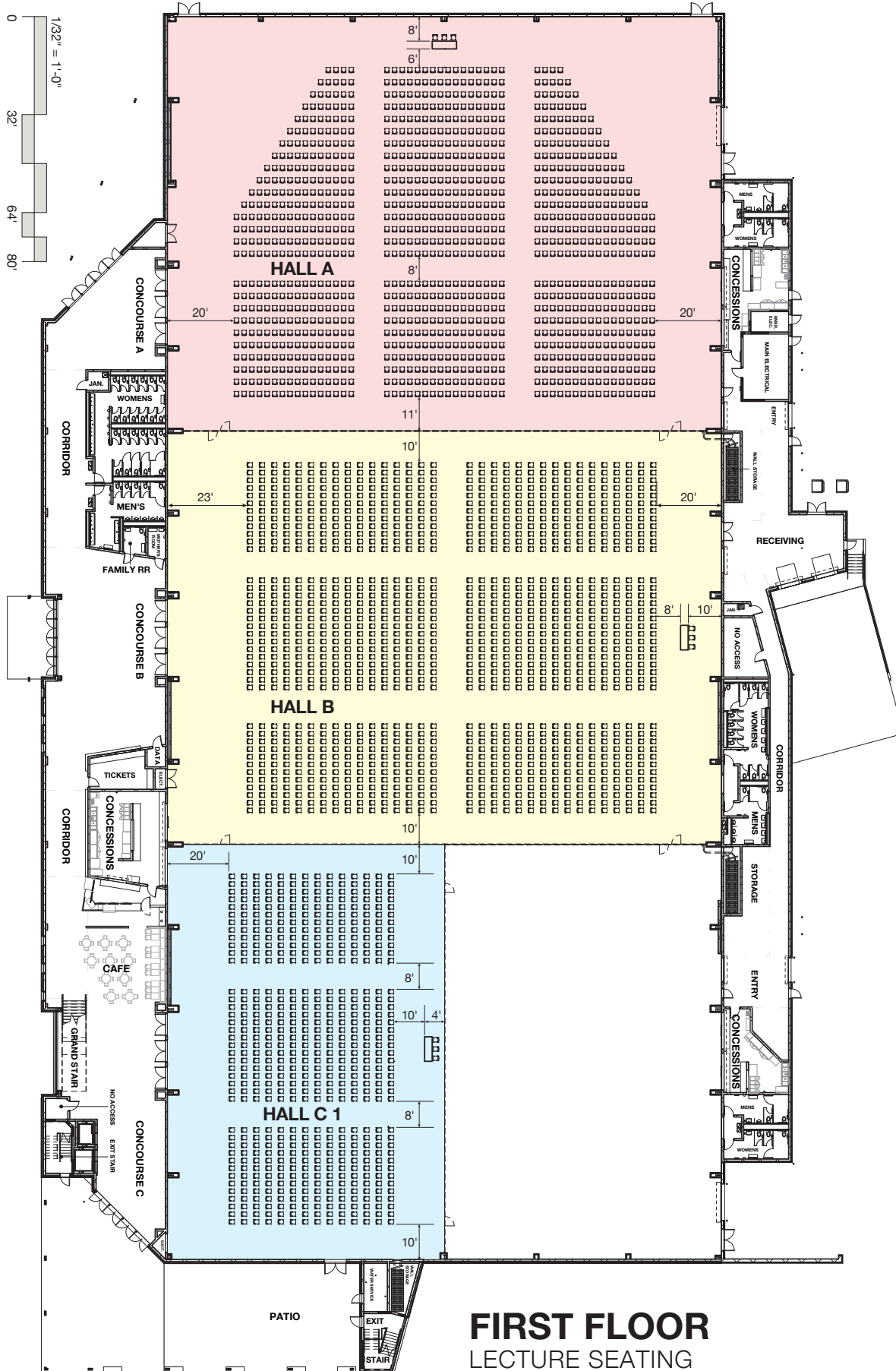




Meeting Rooms- Classroom Option

1/16" = 1'-0"





Notes:
Seating for 1,092 people with head table.

HALL A

Notes:
Seating for 1,280 people with head table.

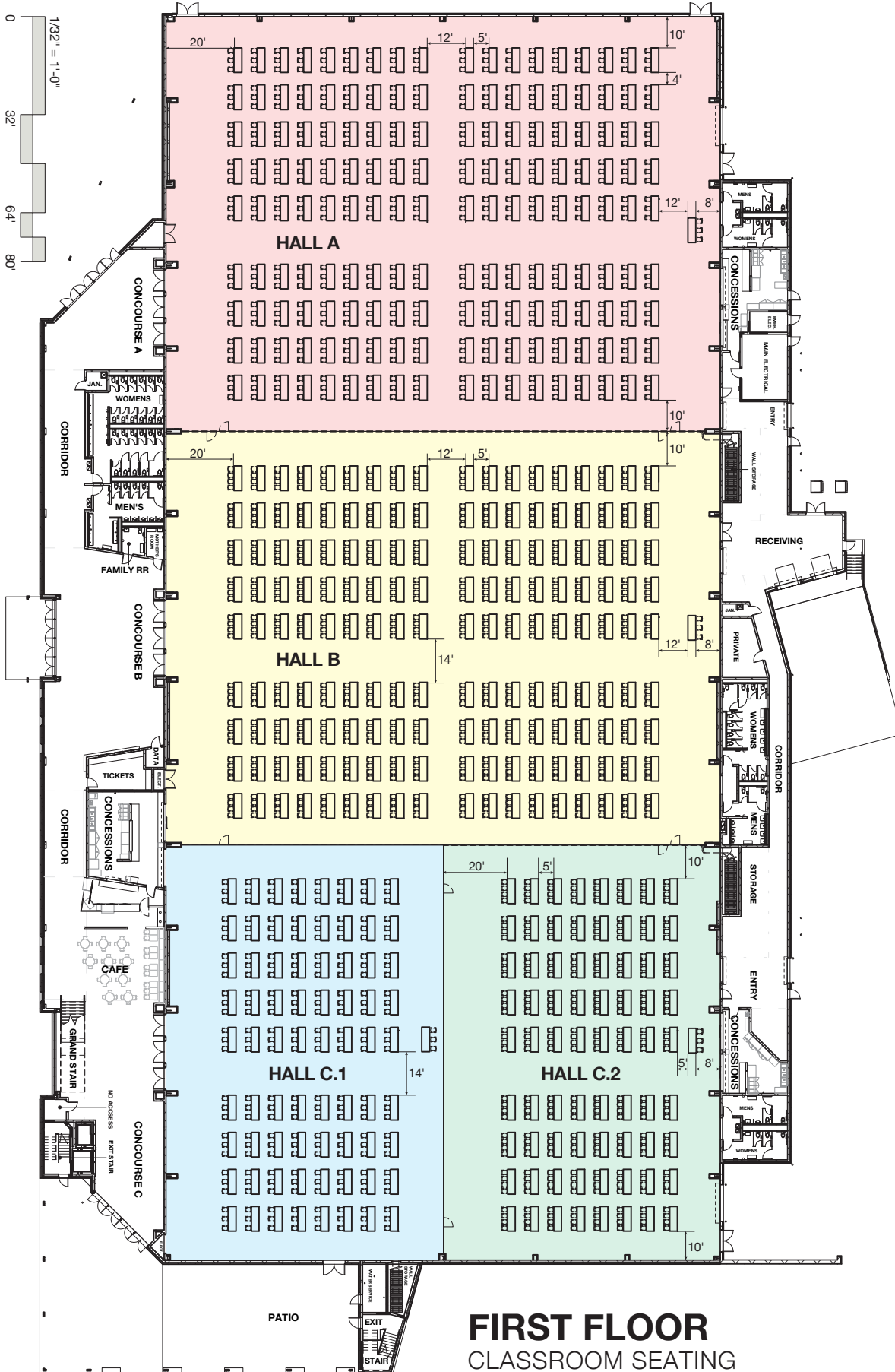
HALL B

Notes:
Seating for 640 people with head table.

HALL C.1

FIRST FLOOR LECTURE SEATING





Notes:

- 8' tables
- 3 chairs per table
- 162 tables
- Seating for 486 people with head table.

HALL A

Notes:

- 8' tables
- 4 chairs per table
- 162 tables
- Seating for 648 people with head table.

HALL B

Notes:

- 8' tables
- 3 chairs per table
- 72 tables
- Seating for 216 people with head table.

HALL C.1

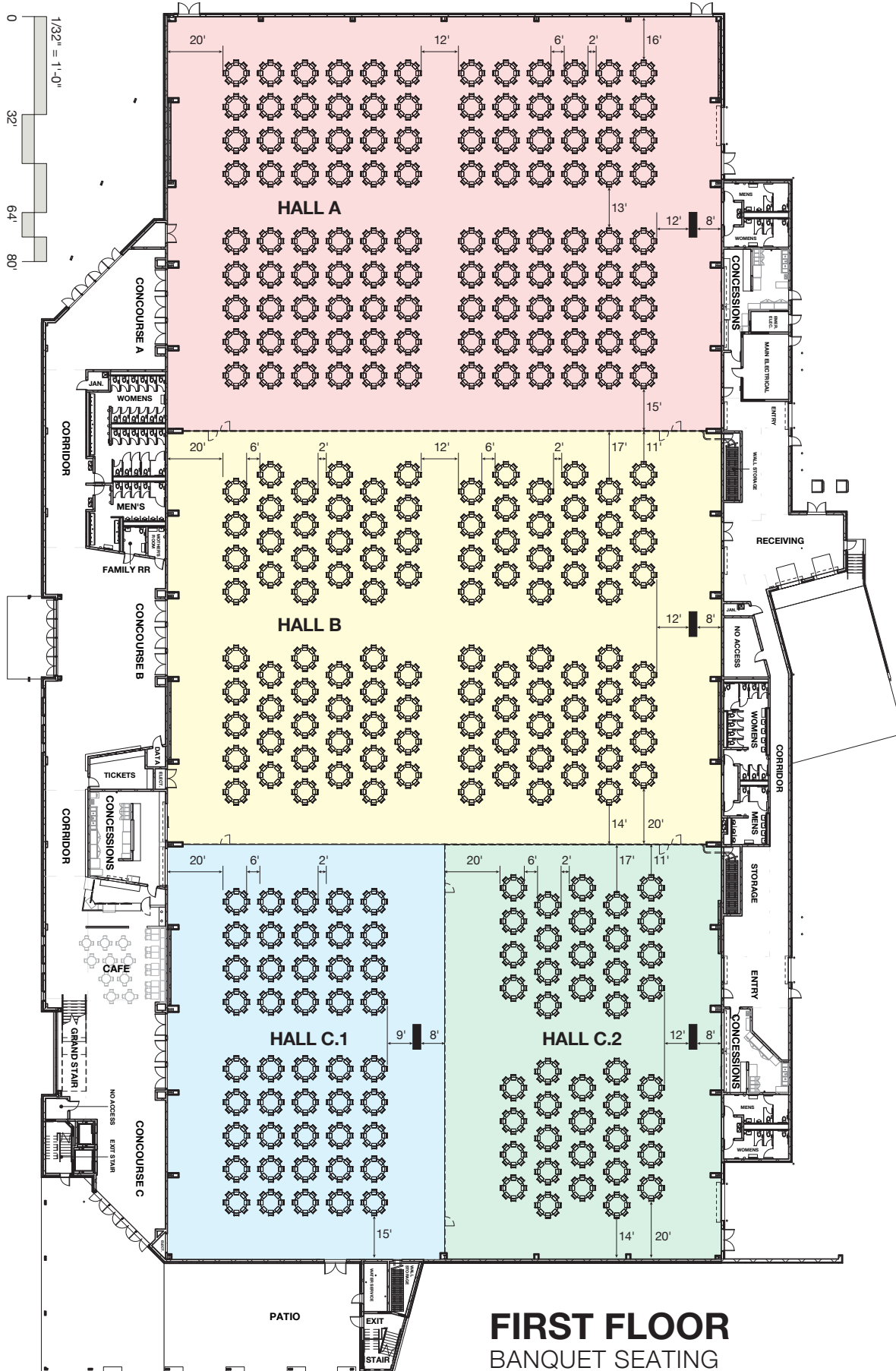
Notes:

- 8' tables
- 4 chairs per table
- 72 tables
- Seating for 288 people with head table.

HALL C.2

FIRST FLOOR CLASSROOM SEATING





Notes:

- 8' tables
- 3 chairs per table
- 162 tables

Seating for 486 people with head table.

HALL A

Notes:

- 8' tables
- 4 chairs per table
- 162 tables

Seating for 648 people with head table.

HALL B

Notes:

- 8' tables
- 3 chairs per table
- 72 tables

Seating for 216 people with head table.

HALL C.1

Notes:

- 8' tables
- 4 chairs per table
- 72 tables

Seating for 288 people with head table.

HALL C.2

FIRST FLOOR BANQUET SEATING

